

# 2024 annual report to the Community

## Kingston Community School

Kingston Community School number: 737

Partnership: South East Coast & Vines



School principal:

Samantha Murdock

A white rectangular box containing a handwritten signature in black ink that reads "S. Murdock".



Government  
of South Australia  
Department for Education

Date of endorsement:

03/03/2025

# Context Statement

Kingston Community School caters for students from R-12. At the time of this report, the enrolment in 2024 is 313. Kingston Community School is classified as Category 5 on the Department for Education Index of Educational Disadvantage. At the time of this report, the school population includes 4% Aboriginal students, 2% students with disabilities, 1% children/young people in care. Further information about the school is available on the school's website (including its context statement), as well as the My School website.

Data Source: Department for Education data holdings from Mid census captured in AUGUST 2024.

## Governing Council Report

I cannot believe that we are in the final stages of Term 4 2024.

It only feels like weeks ago, in Term 1, that we watched the very successful Colour Run.

It was fantastic watching the staff and students enjoy themselves so much and a bonus, raised greatly needed funds for the school. I hope that it becomes an annual event. Fundraising or not.

In Term 1 we also held the first Working Bee in many years. 25 Families, Staff and Students volunteered their time to enhance our school grounds. They made a great difference and Kingston Community School looked fantastic when we hosted and won Interschool Sports Day. Keep it up KCS hopefully 2025 will be our fourth win in a row!

Thank you to our Canteen Managers Robbi Hudd and Renae Bawden. Another successful year completed. The Governing Council appreciates all you do to feed our students. Thank you must also go to all the canteen volunteers. Your donated time helps our canteen survive. Hopefully next year we can return to a Roster System with more family volunteers. Many hands make light work.

Thanks also to all the kind people who volunteer time to KCS. We have many members of the community volunteering in many invaluable ways around the school. Please if you have any spare time contact the school regarding how you can help.

Thank you to the 2024 Governing Council Members. Your time, commitment, and input are so beneficial to the school. Special Thanks to Retiring Governing Council Members. Your input will be missed. Your years of service have been appreciated. Retiring Governing Council Members will mean that there will be positions open for the 2025 school year. Two meetings per term are all we ask.

15 of our students completed Year 12 this year. Congratulations to both students and teachers for making it through. On behalf of the 2024 Governing Councilors, I wish you every success with your next steps. We hope that you will remember fondly your time spent and the people you met at Kingston Community School and that your time here has set you up for the bright futures you all deserve. I look forward to hearing about your adventures.

Facta Non Verba.

Kellie Foreman

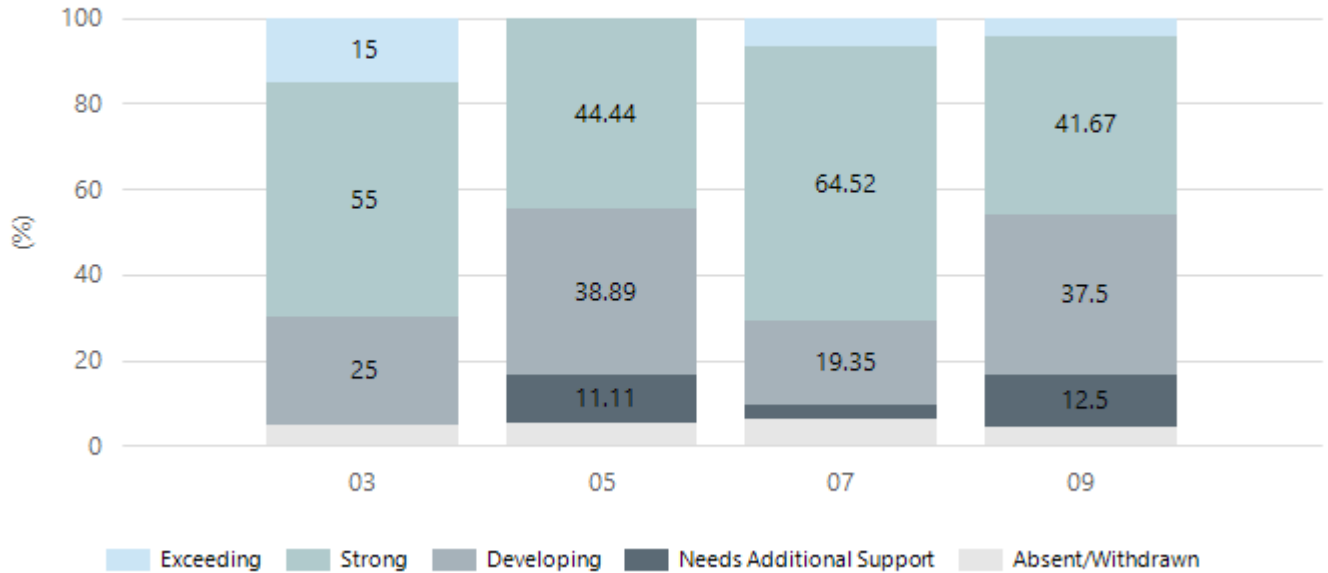
2024 Chairperson

# Performance Summary

## NAPLAN Proficiency

In 2023 the Australian Curriculum, Assessment and Reporting Authority (ACARA) - a Commonwealth Independent statutory authority - announced changes to NAPLAN performance reporting. The new approach replaces the previous numerical NAPLAN bands and the national minimum standard.

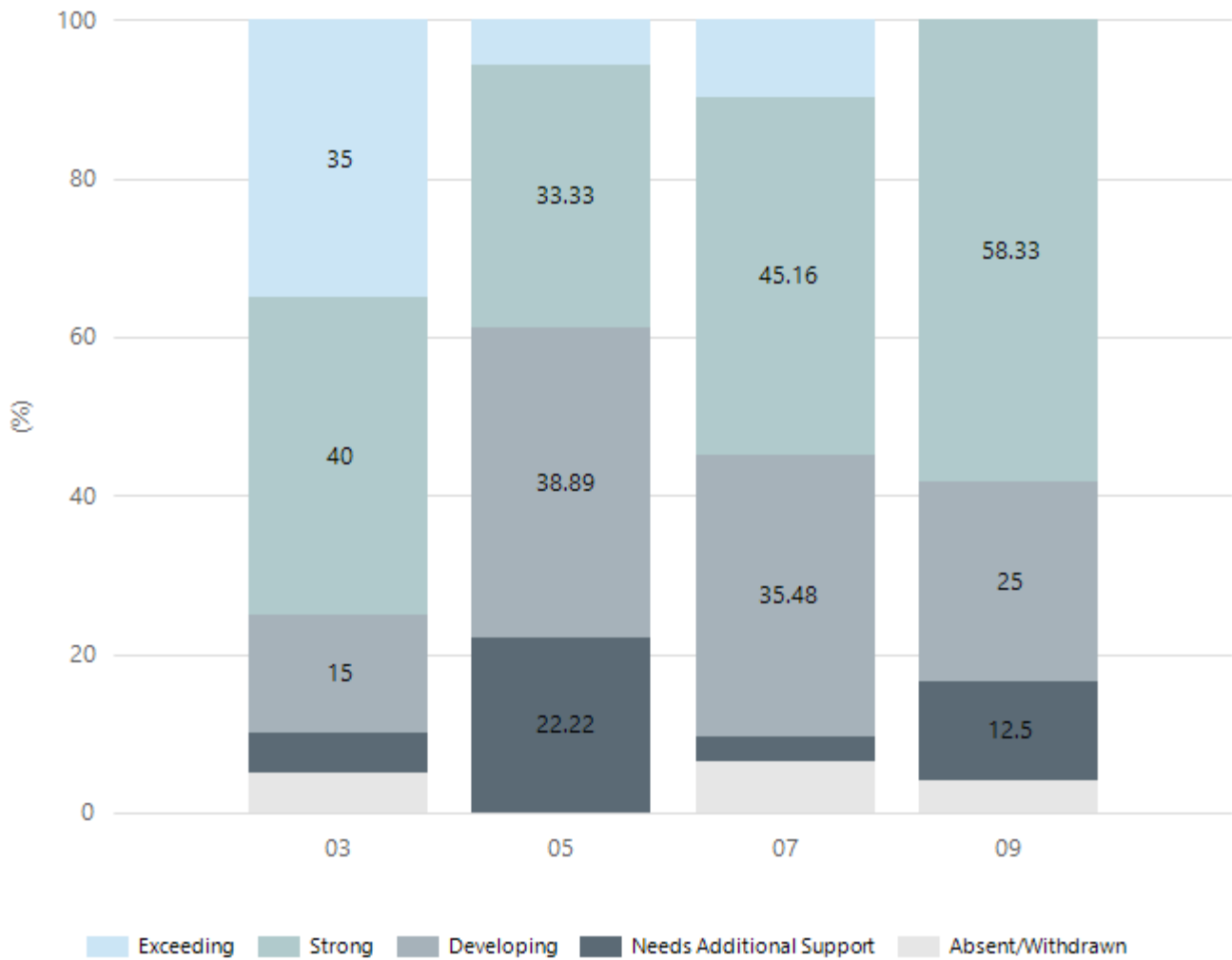
### Numeracy



Year Level	03	05	07	09
Exceeding	3		2	1
Strong	11	8	20	10
Developing	5	7	6	9
Needs Additional Support		2	1	3
Absent/Withdrawn	1	1	2	1
Total	20	18	31	24

Data Source: Department for Education Assessment Data Holdings, 2024. If there are less than 6 students who sat NAPLAN in a school, no information will be shown. If a year level has less than 6 students, that year level will not be shown in NAPLAN results.

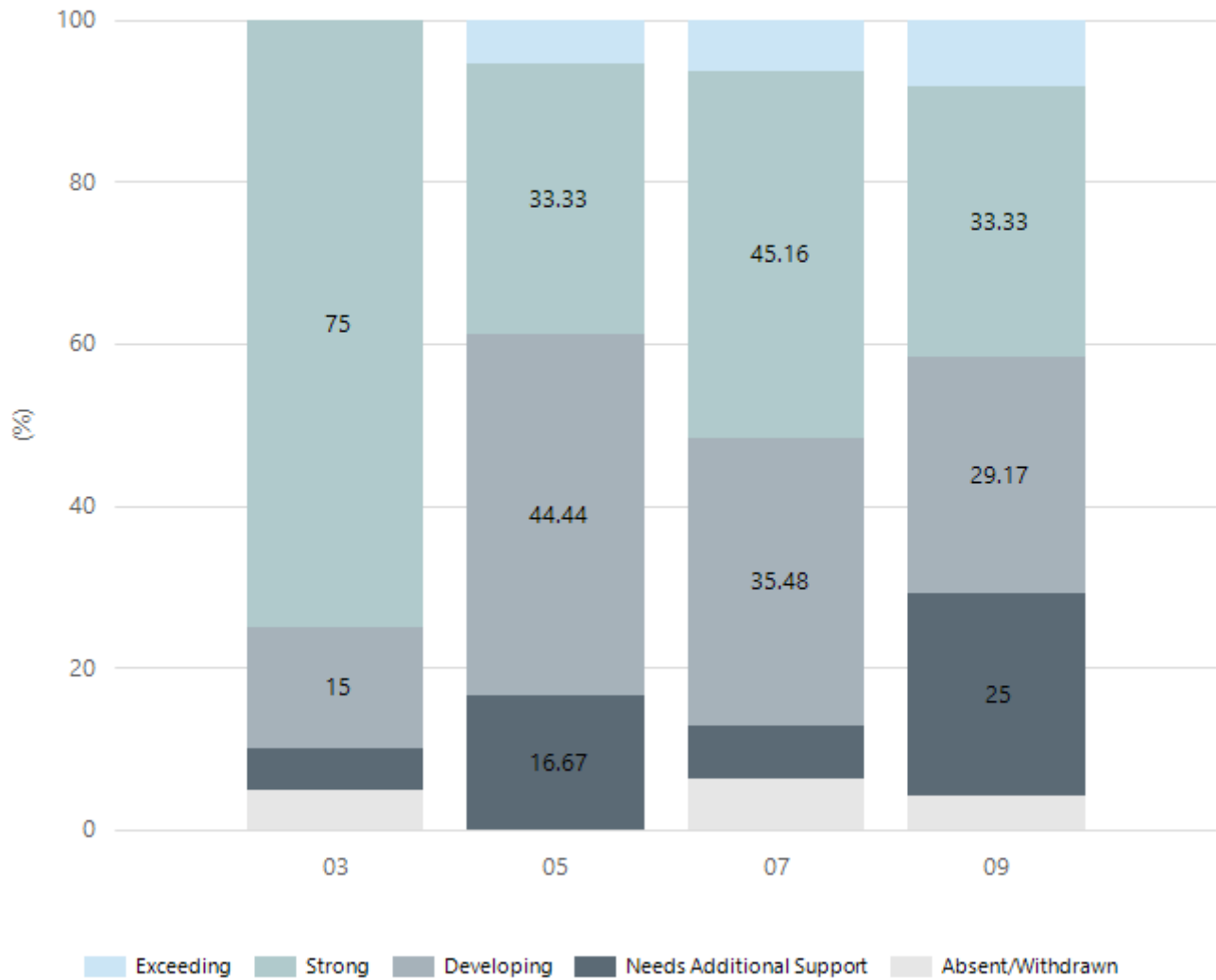
## Reading



Year Level	03	05	07	09
Exceeding	7	1	3	
Strong	8	6	14	14
Developing	3	7	11	6
Needs Additional Support	1	4	1	3
Absent/Withdrawn	1		2	1
Total	20	18	31	24

Data Source: Department for Education Assessment Data Holdings, 2024. If there are less than 6 students who sat NAPLAN in a school, no information will be shown. If a year level has less than 6 students, that year level will not be shown in NAPLAN results.

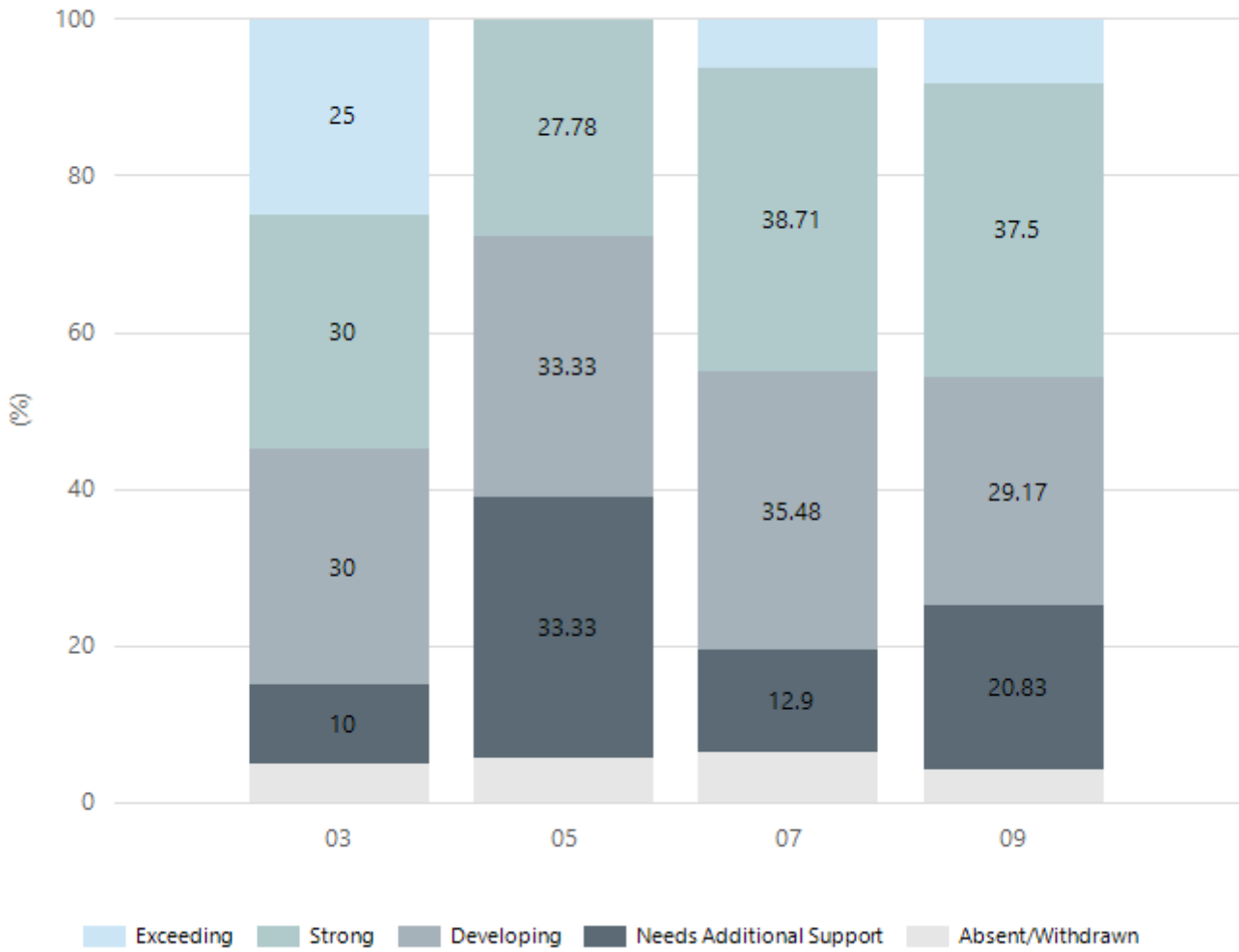
## Writing



Year Level	03	05	07	09
Exceeding		1	2	2
Strong	15	6	14	8
Developing	3	8	11	7
Needs Additional Support	1	3	2	6
Absent/Withdrawn	1		2	1
Total	20	18	31	24

Data Source: Department for Education Assessment Data Holdings, 2024. If there are less than 6 students who sat NAPLAN in a school, no information will be shown. If a year level has less than 6 students, that year level will not be shown in NAPLAN results.

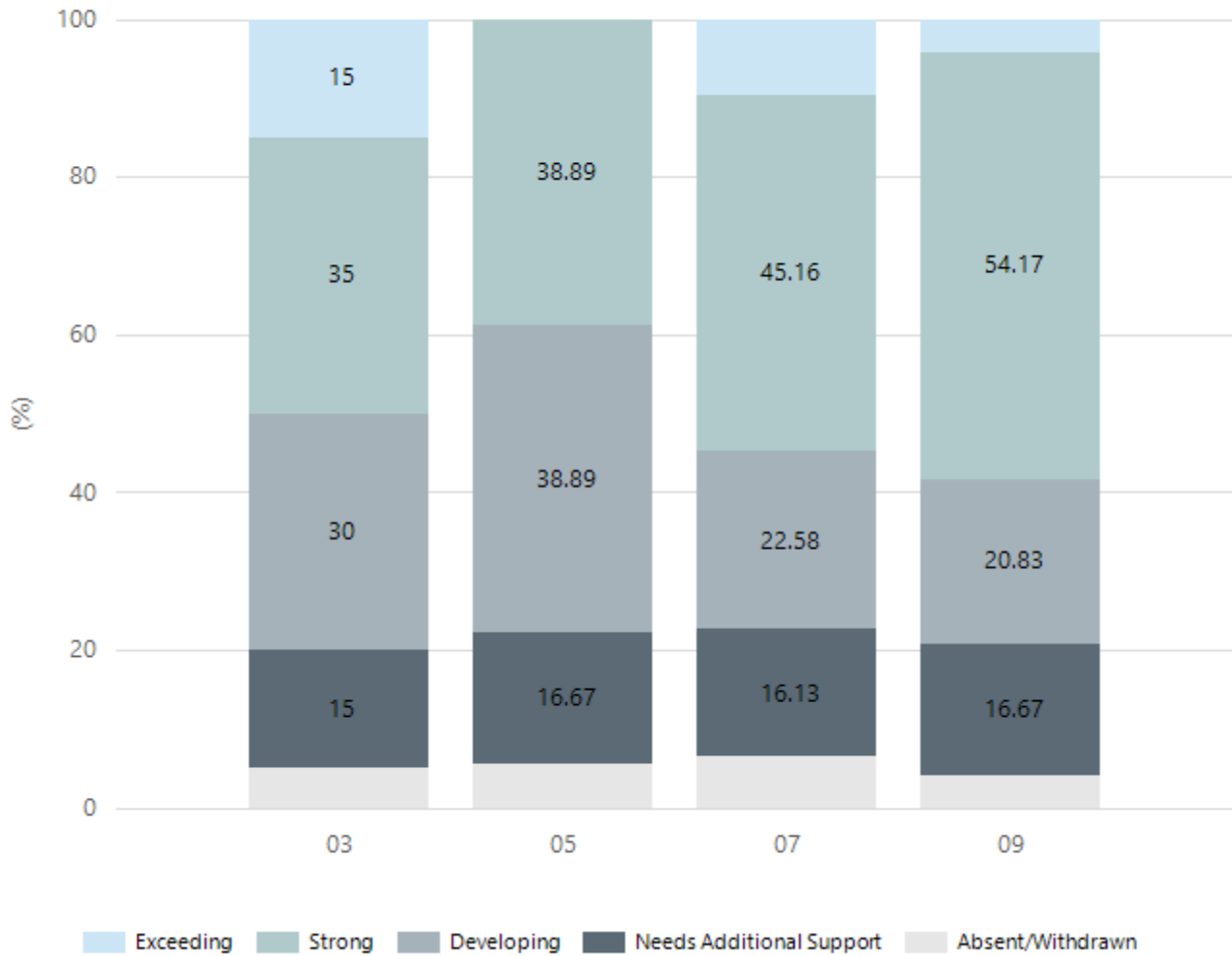
## Grammar



Year Level	03	05	07	09
Exceeding	5		2	2
Strong	6	5	12	9
Developing	6	6	11	7
Needs Additional Support	2	6	4	5
Absent/Withdrawn	1	1	2	1
Total	20	18	31	24

Data Source: Department for Education Assessment Data Holdings, 2024. If there are less than 6 students who sat NAPLAN in a school, no information will be shown. If a year level has less than 6 students, that year level will not be shown in NAPLAN results.

## Spelling



Year Level	03	05	07	09
Exceeding	3		3	1
Strong	7	7	14	13
Developing	6	7	7	5
Needs Additional Support	3	3	5	4
Absent/Withdrawn	1	1	2	1
Total	20	18	31	24

Data Source: Department for Education Assessment Data Holdings, 2024. If there are less than 6 students who sat NAPLAN in a school, no information will be shown. If a year level has less than 6 students, that year level will not be shown in NAPLAN results.

# South Australian Certificate of Education - SACE

## SACE Stage 2 Grades - Percentage of grades that are C- or above for attempted SACE subjects (SEA)

2021	2022	2023	2024
100%	100%	100%	100%

Data Source: SACE School Data Reports, as of February 2024 for 2021-2023. 2024 SACE results are School supplied data. When there are less than six students, no data is supplied. Due to rounding of percentages, total results may not add up to 100%.

## SACE Stage 2 Grade Distribution

Grade	2021	2022	2023	2024
A+			5%	
A	11%	7%	10%	6.9%
A-	6%	7%	6%	8.3%
B+	16%	7%	10%	11.1%
B	16%	10%	19%	23.6%
B-	9%	20%	23%	16.7%
C+	20%	27%	9%	16.7%
C	19%	17%	11%	11.1%
C-	4%	7%	8%	5.6%

Data Source: SACE School Data Reports, as of February 2024 for 2021-2023. 2024 SACE results are School supplied data. When there are less than six students, no data is supplied. Due to rounding of percentages, total results may not add up to 100%.



## SACE Completion - Percentage of completers out of those students who had the potential to complete their SACE in October that year

2021	2022	2023	2024
100%	100%	100%	100%

Data Source: SACE School Data Reports, as of February 2024 for 2021-2023. 2024 SACE results are School supplied data. When there are less than six students, no data is supplied. Due to rounding of percentages, total results may not add up to 100%.

## Year 12 Students undertaking Vocational or Trade Training (VET)

	2022	2023	2024
Percentage of Year 12 students undertaking Vocational Training or Trade Training			40%
Percentage of Year 12 students attaining a Year 12 certificate or equivalent VET qualification			

Data Source: School supplied data

## School Attendance

Year Level	2022	2023	2024
Reception	85.0%	89.5%	94.2%
Year 01	88.1%	84.1%	90.2%
Year 02	88.7%	88.2%	91.0%
Year 03	82.0%	91.5%	91.3%
Year 04	83.1%	83.8%	92.4%
Year 05	90.5%	83.8%	90.9%
Year 06	88.6%	91.5%	90.5%
Year 07	86.0%	87.4%	88.9%
Year 08	81.4%	83.8%	88.5%
Year 09	82.1%	78.2%	86.3%
Year 10	79.1%	77.7%	79.6%
Year 11	69.8%	73.6%	72.4%
Year 12	63.9%	77.0%	70.9%
Total	82.1%	83.0%	85.8%

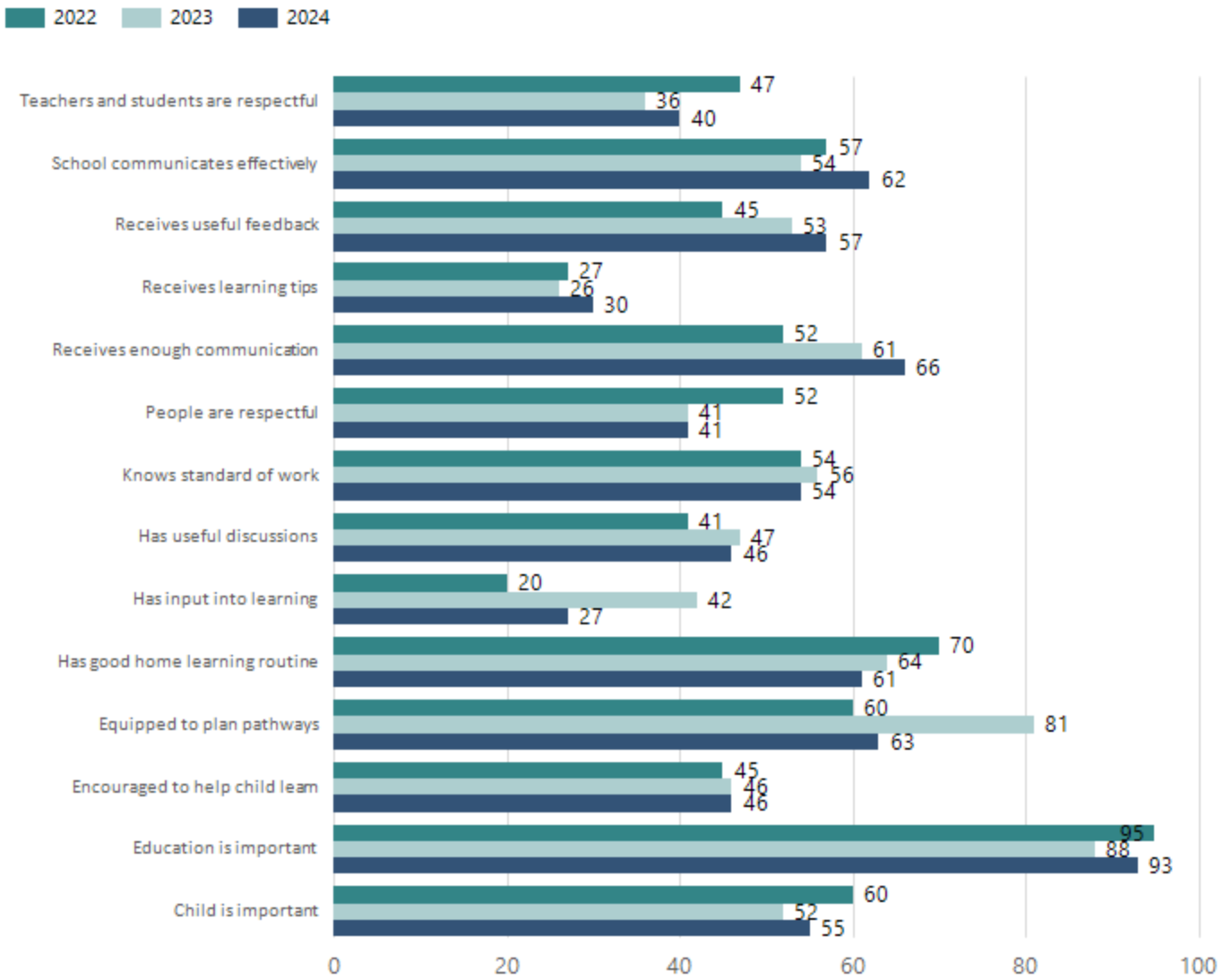
Data Source: Department for Education Attendance Data, Semester 1 Report 2024. A blank cell indicates there we no students enrolled. 'Primary Other' includes students enrolled in specialised education options. 'Secondary Other' includes students who have already spent a year at Year 12 and elected to undertake further study at Year 12.

## Attendance Comment

In South Australia, all children and young people must be in school from 6 years to 16 years old. They must attend a government or non-government school full time. From age 16 to 17 however, young people must attend school or an approved learning program (such as an apprenticeship, traineeship, accredited course or university). Schools and parents must encourage and support students to come to school every day. Parents and caregivers must make sure their child is enrolled in a school, and attends school all day and everyday it is open, unless a child is sick or has an approved exemption. Teachers and leaders actively follow up when a student misses school, including recording all absences and non-attendance. All schools in South Australia have local attendance procedures governed under the Education and Children's Services Regulations 2020.

# School Parent Opinion Survey Results

Proportion of agree/strongly agree response(%)



Data Source: 2024 Department for Education Parent Opinions Survey, Term 3 2024.

# Intended Destination

Leave Reason	Number	%
IS - INTERSTATE	1	7.0%
U - UNKNOWN	12	86.0%
VI - LEFT SA FOR VIC	1	7.0%

Data Source: Department for Education Destination Data Report, 2024. Data extract term 3 2024. Data shows recorded destinations for students that left the school in the previous year. Data is uploaded by schools in term 3 and may not reflect final or total figures at time of report creation.

## Highest Qualifications held by the teaching workforce and workforce composition

All teachers at this school are qualified and registered with the SA Teachers Registration Board.

Qualification Level	Number of Qualifications
Bachelor's degrees or Diplomas	19
Postgraduate Qualifications	14

Data Source: Data extracted from Mandatory Workforce Information Collections as on the last pay date of June 2024. As self-reported by staff in the system.

Please note: Data includes staff who are Actively employed and on extended paid leave. Please note only the highest qualification of the Teaching staff is reported. Excludes any number of other certifications earned.

### Workforce composition including indigenous staff

	Teaching Staff		Non-Teaching Staff	
	Indigenous	Non-Indigenous	Indigenous	Non-Indigenous
Full-Time Equivalents	1.0	26.3	0.7	12.8
Persons	1.0	32.0	1.0	16.0

Data Source: Data extracted from Mandatory Workforce Information Collection as on the last pay date of June 2024.

Please note: Data includes staff who are actively employed and on extended paid leave. "Indigenous category" is self-reported by staff in the system.

## Financial Statement

Funding Source	Amount
Grants: State	\$4 908 414
Grants: Commonwealth	NIL
Parent Contributions	\$100 285
Fund Raising	\$10 999
Other	\$27 266

Data Source: School supplied data.